



LAUNCHPORT

*LaunchPort
Training Guide*



The iPort Story...



Dana Innovation's founders Scott Struthers and Geoff Spencer, inventors of the in-wall speaker had an idea: "What if you could dock your iPod in a wall?" This idea sparked the start of iPort: the intersection of Apple technology and custom installation.

Since its inception in 2004, iPort has released a variety of innovative products including the world's first in-wall docking station for iPod, the IW, and the world's first control mount for iOS devices, the CM. These iPort products provide comprehensive solutions for custom integration scenarios including RS-232 and IP control integration, as well as provide an elegant and unparalleled user experience.

Key milestones in iPort's history include:

- 2004—First in-wall docking station for iPod
- 2007—iPort releases FS 2 series free-standing integration iPod docks
- 2009—CM-IW100T control mount for iPod touch wins Best New Product Award at CEDIA Expo
- 2010—iPort releases CM-IW2000 control mount for iPad
- 2011—iPort releases LaunchPort, the world's first inductive charging and mounting system for iPad 2

iPort continues to lead in innovation today with its recent announcement of LaunchPort, the world's first inductive charging and mounting system for iPad 2. Learn more at www.iportmusic.com and www.launchport.com.

What sets iPort products apart:

- Focus on design
- Focus on user experience
- Straight forward installation
- Compatible with a variety of control/automation systems

Read on to learn more: On the following pages, we'll explain how iPort technologies work to create a unique and pleasant experience for the customer. Plus, we'll provide a simple and successful method for selling and installing the products.

A Closer Look at LaunchPort Technology...

LaunchPort's Unique Technology

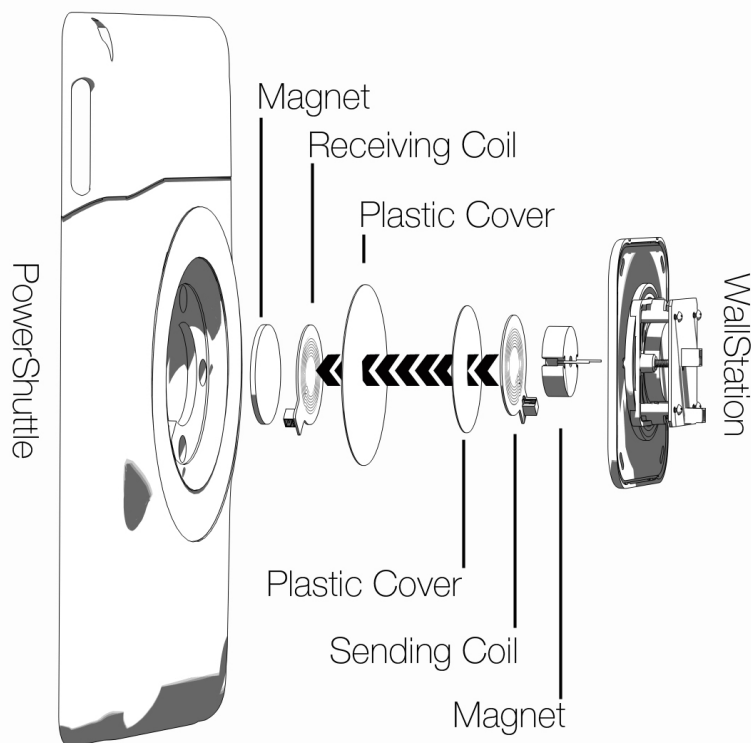
LaunchPort is an innovative system for charging and mounting your iPad 2. The LaunchPort system consists of a PowerShuttle (which is a sleeve-style case for an iPad 2) and a Station. Any LaunchPort PowerShuttle works with any LaunchPort Station. LaunchPort charges your iPad via the magic of induction technology. Power transmits through the air between a LaunchPort Station and PowerShuttle, without wires! The LaunchPort PowerShuttle mounts to a Station with magnetism for effortless and secure mounting virtually anywhere.

How this benefits me: Effortlessly mount and charge your iPad in a variety of situations with LaunchPort. You can easily use your iPad on a wall as a control touch panel or information center. It's also fully portable so it goes where you go. When the iPad is off the wall, the WallStation is designed with minimalism in mind, so it does not stand out.

Inductive Charging

Inductive Charging is the ability to send electricity through the air between two devices. This is the same technology found in an electric toothbrush system. The charging system is very efficient, charging the iPad in the same amount of time as the Apple Power Adapter.

How this benefits me: Induction is beneficial because there are no wires required to connect two devices together. Additionally, induction has no conductive metal points between the two devices, which means transfer of electricity is very safe and never generates so much heat that it becomes too hot to touch. The PowerShuttle also features a mini USB port for charging on the go.



Magnetic Mounting

LaunchPort uses magnets to mount a PowerShuttle onto a Station or any other metallic surface.

Magnets are used because they provide a secure holding force to mount an iPad properly. At the same time, magnets also make it easy to disconnect the PowerShuttle from the Station.

How this benefits me: Mounting and un-mounting your iPad to and from the Station is a cinch. There's no need to worry about aligning mechanical tabs or clamps. The magnets securely and consistently hold your iPad in place.



Wave Guide for iPad Speaker

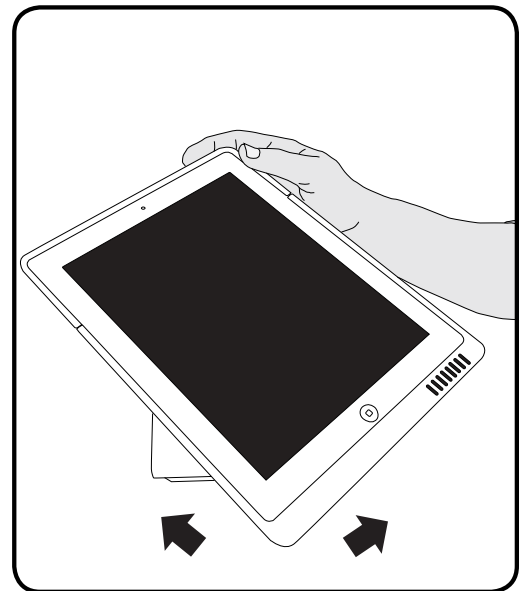
The LaunchPort PowerShuttle provides a wave guide for directing sound back at the user, instead of away from the user as default on an iPad.

How this benefits me: You'll enjoy a better overall media experience than ever on your iPad with concentrated sound directed at your ears instead of dissipating out into the room.

360-Degree Rotation

LaunchPort Stations allow an iPad to freely rotate through 360-degrees while mounted. This freedom of motion temporarily stops at 90-degree increments via mechanical detents built into the PowerShuttle case and Stations.

How this benefits me: The freedom of rotation allows you to orient the iPad however you wish, and guides the iPad into 90-degree increments, eliminating the need to fine-adjust a level iPad on a wall.



LAUNCHPORT *PowerShuttle*

The LaunchPort PowerShuttle for iPad is a sleeve-style, soft touch black or gloss white case. It securely holds the iPad and is used to mount to the BaseStation and WallStation. It has a built-in wave guide for the iPad speaker that directs sound back at you for a better media experience. It's equipped with a Mini USB port for charging and syncing on the go. Because the PowerShuttle contains magnets, you can also mount it to any metallic surface.

PowerShuttle Features:

- * Wireless Inductive charging and mounting for iPad 2
- * Form fitting sleeve which provides a safe home for the iPad
- * USB pass through
- * High grade fit and finish
- * Available in soft touch black or gloss white
- * Wave Guide
- * 360° rotation allows the iPad to be in either portrait or landscape orientations while mounted.
- * Maintains total iPad functionality while charging

PowerShuttle Includes:

- * Upper PowerShuttle sleeve with power and volume control accessibility
- * Lower PowerShuttle sleeve with hand grips, detents, charging and magnetic rings, mini-USB port, and wave guide

Compatible With:

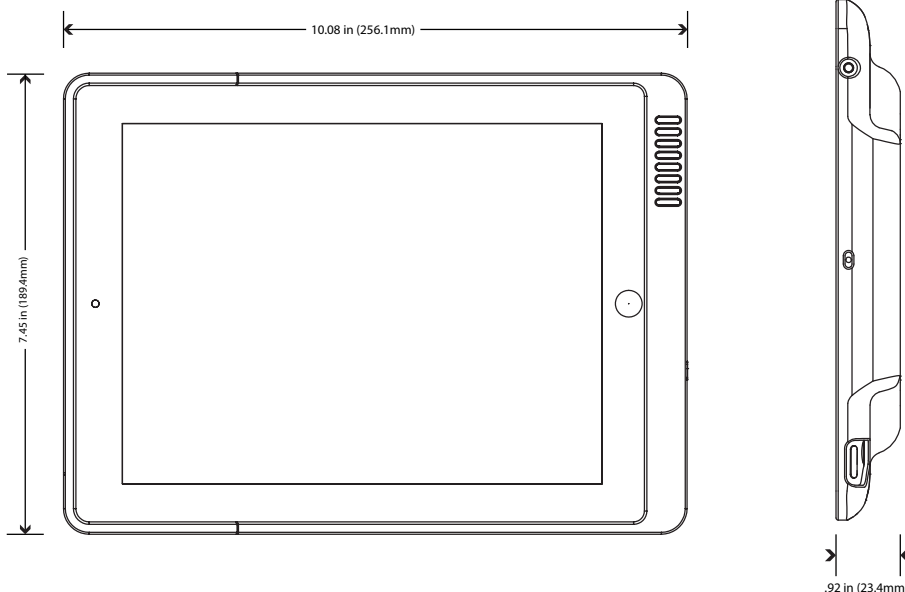
- * iPad 2



Sku 70140



Sku 70146



LAUNCHPORT *BaseStation*

The BaseStation allows you to mount your iPad to a table top base to use and charge. The mounting and induction charging ring provides a connection point for a PowerShuttle. Made of brushed aluminum, the BaseStation looks great with all your Apple products.

BaseStation Features:

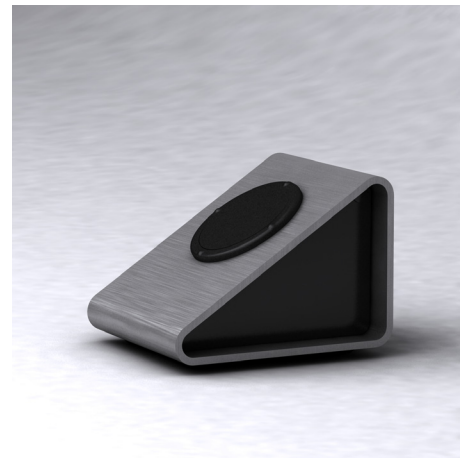
- * Wireless Inductive charging and mounting for iPad 2
- * Magnetic table top mounting station
- * Effortless mounting and removal
- * 360° rotation allows the iPad to be in either portrait or landscape orientations while mounted
- * Maintains total iPad functionality while charging

BaseStation Includes:

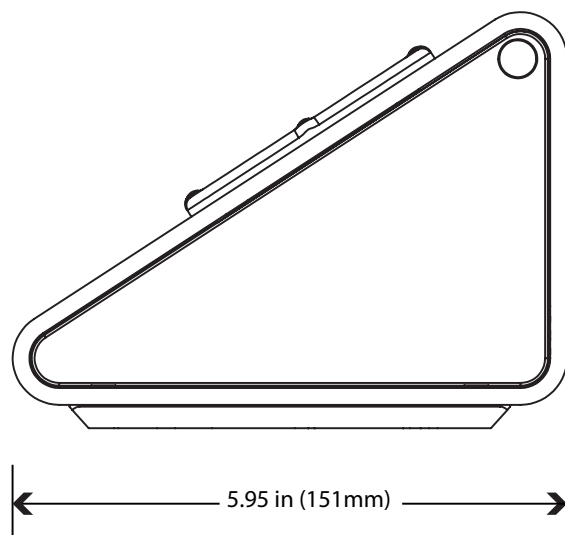
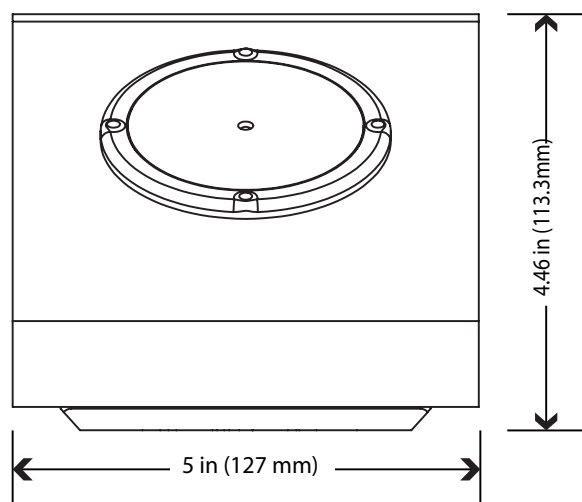
- * Extruded aluminum base station with brushed finish
- * Power supply

Compatible With:

- * iPad 2

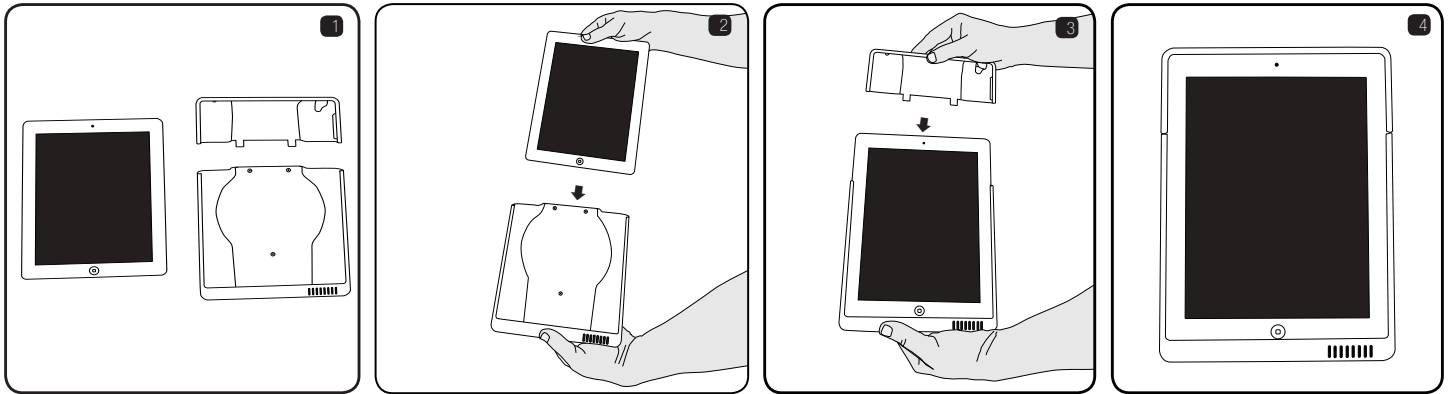


SKU 70141

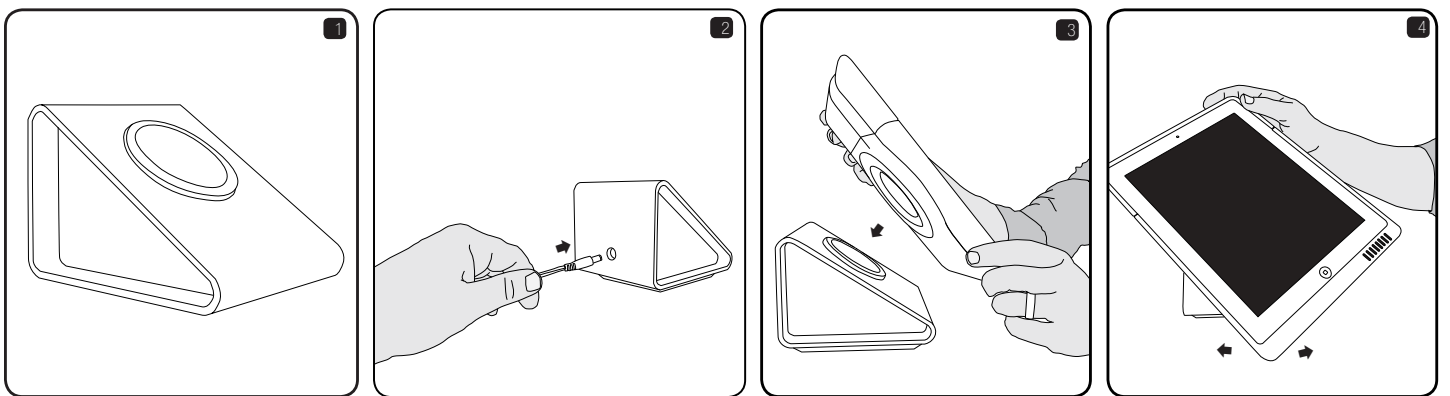


LAUNCHPORT PowerShuttle & BaseStation

PowerShuttle



BaseStation



LAUNCHPORT *WallStation*

The LaunchPort WallStation provides a home for your iPad 2 on the wall. It securely mounts and charges your iPad using a LaunchPort PowerShuttle. The WallStation was designed so that anyone can install one in their home. The WallStation uses inductive charging and magnetic mounting, providing effortless mounting and charging, without wires. The LaunchPort WallStation transforms your wall into an information center, gallery, video conferencing center, or whatever else you can imagine.

WallStation Features:

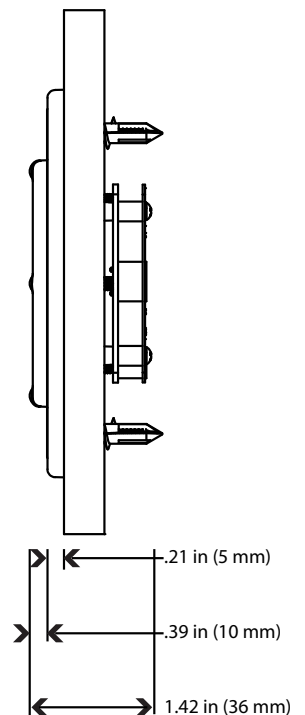
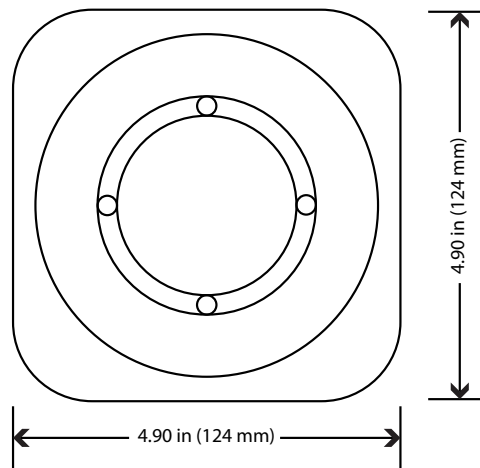
- * Wireless Inductive charging and mounting for iPad 2
- * Magnetic wall mounting station
- * Effortless mounting and removal
- * 360° rotation allows the iPad to be in either portrait or landscape orientations while mounted
- * Maintains total iPad functionality while charging

WallStation Includes:

- * WallStation Assembly
- * Wall Plate
- * Anchors
- * Power Supply



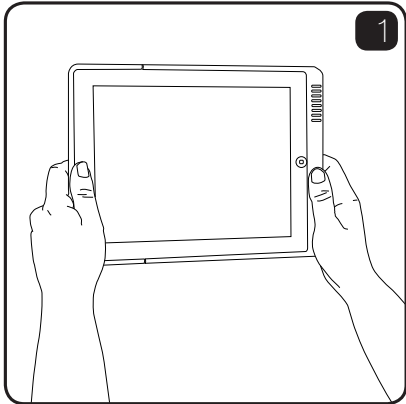
Sku 70142



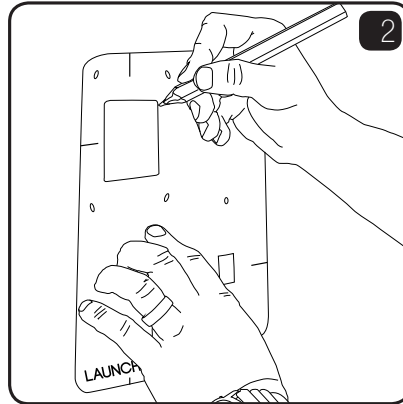
LAUNCHPORT WallStation

 **Turn off power to eliminate risk of shock during installation** 

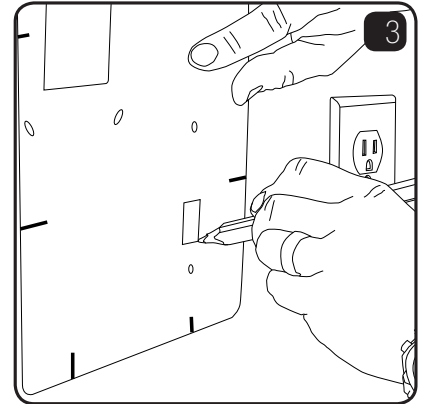
Watch the installation video at LaunchPort.com/support



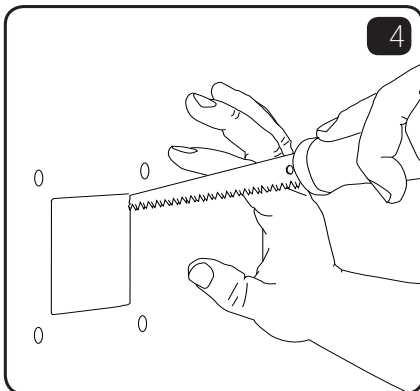
1
Locate ideal mounting area. Mark centerlines of PowerShuttle on wall for reference. Standard height is 62" from floor to center of screen.



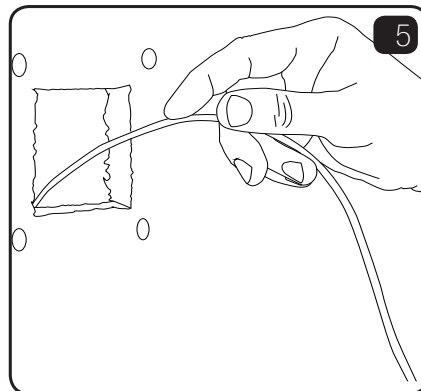
2
Trace cutout and screw locations. Use a stud finder to locate studs. Use a level to ensure a level trace.



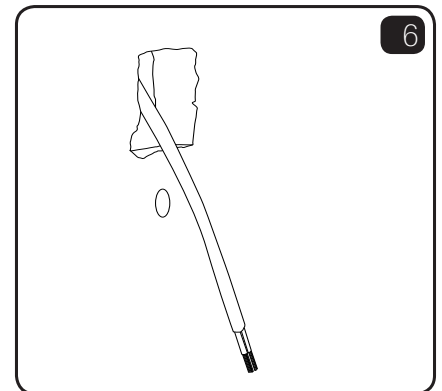
3
Locate desired area for wall plate and trace cutout and screw locations.
*NOTE: wall plate must be within 2 feet of a power outlet.



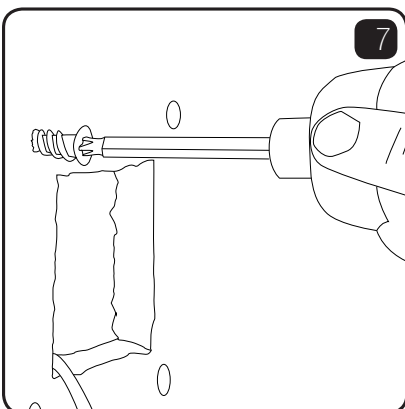
4
Cut opening for WallStation and wall plate using a drywall saw.



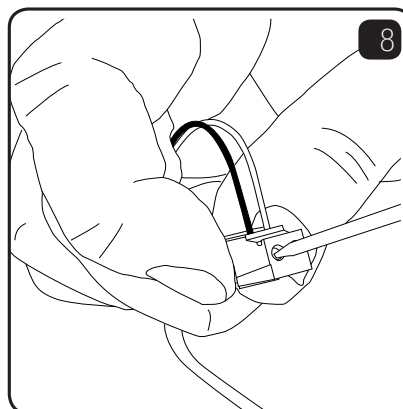
5
Run supplied wire from WallStation cutout to wall plate cutout.
*NOTE: if wiring over 6 feet of distance refer to Wire Sizing Chart below.



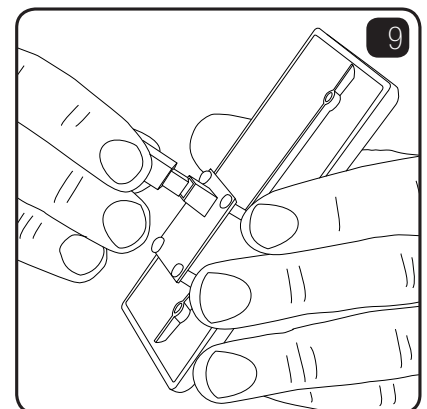
6
Receive wire through wall plate cutout.
*NOTE: For help going through a fire-block refer to: LaunchPort.com/support



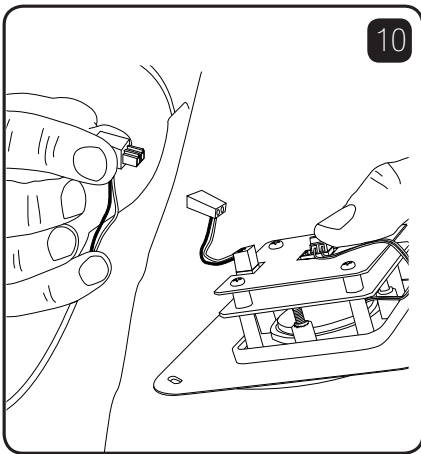
7
Using a screwdriver, install the anchors for the WallStation and wall plate.
*NOTE: For best results pre-drill holes.



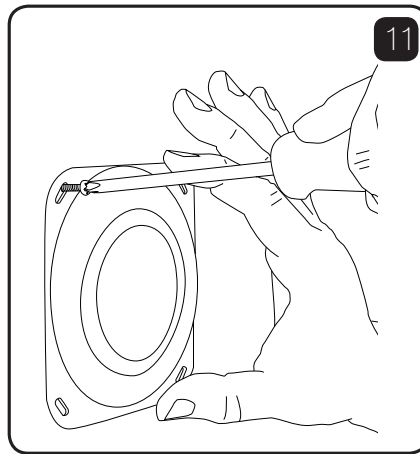
8
Attach connectors to both ends of the wire. Wires must be installed in exactly the same orientation on both connectors.



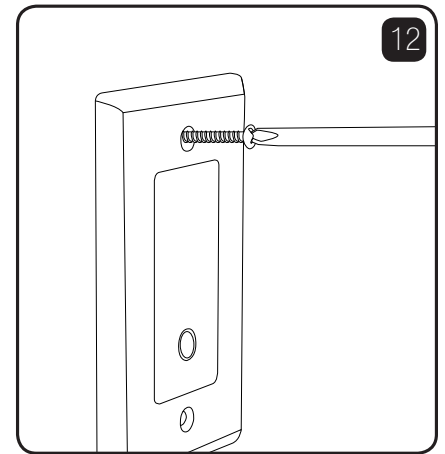
9
Plug connector into wall plate.



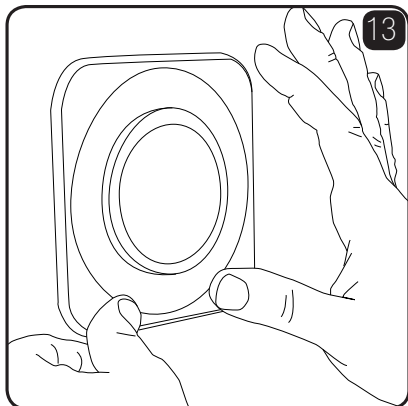
Plug connector into WallStation.



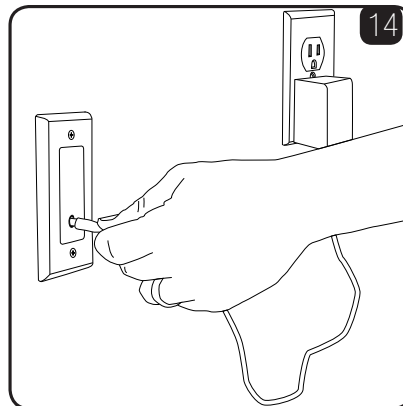
Attach WallStation to the wall using supplied screws.



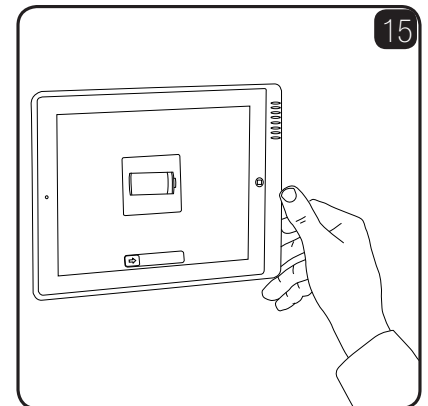
Mount wall plate on wall using supplied screws.



Attach fascia to WallStation.



Plug power adapter into electrical receptical and plug power adapter DC plug into wall plate.



The WallStation is ready to use. Enjoy!

TOOLS REQUIRED

Drywall Saw
 #2 Phillips Screwdriver
 Level
 Measuring Tape
 1.5 mm Slotted Screwdriver

RECOMENDED TOOLS

Stud Finder
 Wire Fishing Tool

BOX CONTENTS

WallStation Assembly
 WallStation Fascia
 wall plate
 Power Supply
 Cut-out Template
 6ft. 18 AWG Electrical Wire
 6 Drywall Anchors
 Mounting Screws for WallStation
 Mounting Screws for wall plate

WIRE SIZING CHART

MAX LENGTH	GAUGE
25'	24 AWG
40'	22 AWG
60'	20 AWG
100'	18 AWG
150'	16 AWG

*Additional wire not included